



# AUO Corporation 1Q25 Results

April 30, 2025



# Safe Harbor Notice

The statements included in this presentation that are not historical in nature are “forward-looking statements”. These forward-looking statements, which may include statements regarding AUO Corporation’s future results of operations, financial condition or business prospects, are subject to significant risks and uncertainties and are based on AUO Corporation’s current expectations.

Actual results may differ materially from those expressed or implied in these forward-looking statements for a variety of reasons, including, among other things: the cyclical nature of our industry; our dependence on introducing new products on a timely basis; our dependence on growth in the demand for our products; our ability to compete effectively; our ability to successfully expand our capacity; our dependence on key personnel; general economic and political conditions, including those related to the TFT-LCD industry; possible disruptions in commercial activities caused by natural and human-induced disasters, including terrorist activity and armed conflict; and fluctuations in foreign currency exchange rates.

Our forward-looking statements at any particular time does not create any duty of disclosure beyond that which is imposed by law, and we expressly disclaim any obligation to publicly update or revise any forward-looking statements, whether as a result of new information, future events or otherwise.

# 綜合損益表摘要

單位: 新台幣百萬元

	1Q25	4Q24	QoQ	1Q24	YoY
銷貨淨額	72,102	68,692	5.0%	59,477	21.2%
營業毛利(損)	8,778 12.2%	5,446 7.9%	61.2%	1,962 3.3%	347.5%
營業費用	7,638 10.6%	8,768 12.8%	(12.9%)	6,902 11.6%	10.7%
營業淨利(損)	1,141 1.6%	(3,323) (4.8%)	-	(4,940) (8.3%)	-
本期淨利 歸屬於母公司業主	3,294	1,619	103.4%	(3,527)	-
營業淨利 + 折舊攤銷	8,790 12.2%	4,715 6.9%	86.4%	3,455 5.8%	154.4%

# 資產負債表摘要

單位: 新台幣百萬元

	1Q25	4Q24	QoQ	1Q24
現金及約當現金	67,418	68,447	(1.5%)	87,674
存貨	33,383	33,811	(1.3%)	29,402
短期借款 <sup>(a)</sup>	19,690	16,304	20.8%	7,799
長期借款	102,486	102,021	0.5%	110,339
權益總額	158,910	159,773	(0.5%)	156,663
資產總額	393,840	392,869	0.2%	382,666
存貨週轉天數 <sup>(b)</sup>	48	49		46
淨負債淨值比率 <sup>(c)</sup>	34.5%	31.2%		19.4%

a) 短期借款係指一年內到期之付息借款。

b) 推算全年之營業成本除以當季平均存貨，再以365天除算而得。

c)  $(\text{短期借款} + \text{長期借款} - \text{現金及約當現金}) / \text{權益總額}$ 。

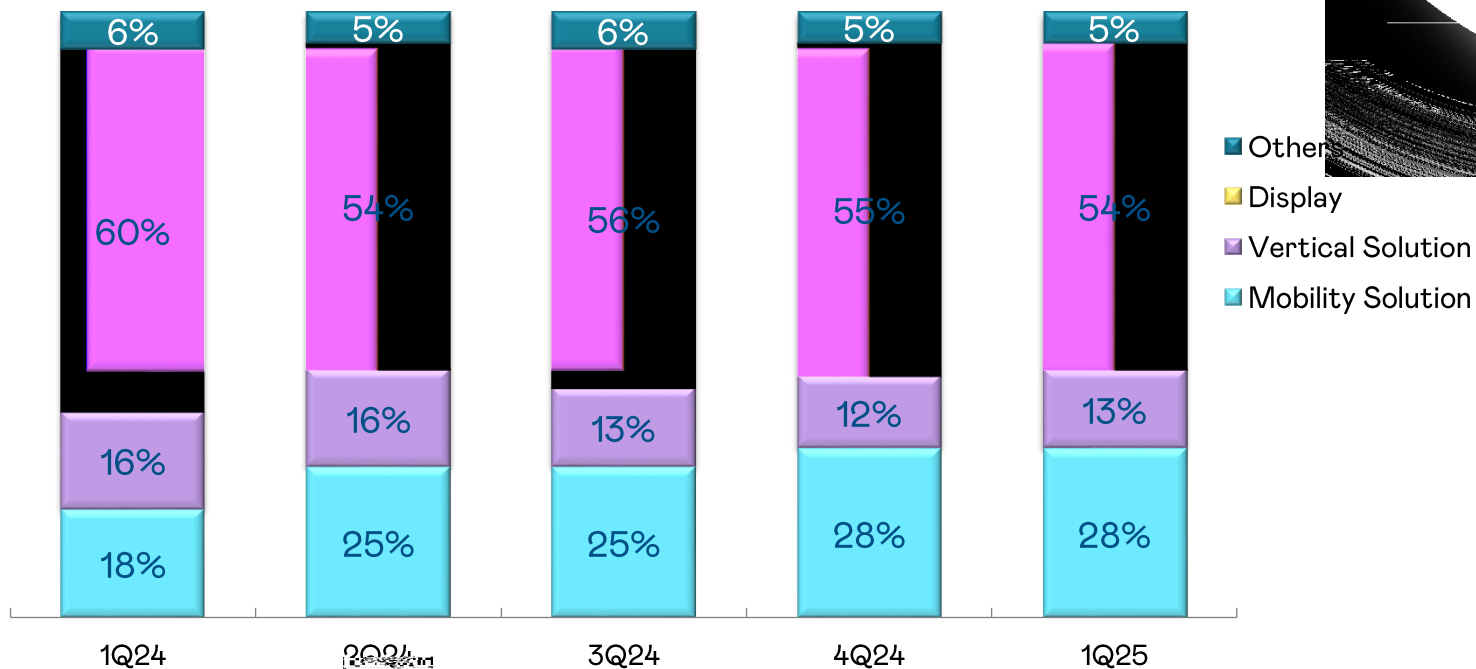
# 頂尖企業主摘要

單位: 新台幣百萬元

	1Q25	4Q24	QoQ
<b>營業活動之現金流入(出)</b>	<b>1,735</b>	<b>8,784</b>	<b>1,170</b>
稅前淨利(損)	4,487	3,019	1,468
折舊及攤銷	7,650	8,038	(389)
營運資金變動	(6,710)	2,970	(9,680)
<b>投資活動之現金流入(出)</b>	<b>(5,121)</b>	<b>(6,023)</b>	<b>903</b>
資本支出	(6,618)	(7,288)	671
<b>籌資活動之現金流入(出)</b>	<b>1,471</b>	<b>2,631</b>	<b>(1,160)</b>
銀行借款淨變動	3,493	2,813	680
庫藏股買回成本	(1,824)	-	(1,824)
<b>現金及約當現金增加(減少)數<sup>(a)</sup></b>	<b>(1,029)</b>	<b>5,162</b>	<b>(6,191)</b>

a) 現金及約當現金增加(減少)數包含營業活動、投資活動、籌資活動之現金流入(出)，以及匯率影響數。

# 營收分類



- Mobility Solution 智慧移動: 主要提供智慧座艙與移動服務解決方案
- Vertical Solution 垂直場域: 主要提供智慧零售、智慧醫療、智慧教育暨企業、智慧服務、其他工商顯示應用及能源事業等垂直場域解決方案
- Display 顯示技術: 主要用於電視、桌上型顯示器及筆記型電腦之顯示面板產品及包含LED顯示屏
- Others 其他: 主要包含達運精密

# 2Q2025 Business Outlook

Based on our current business outlook, the Company expects:

## Mobility Solution

- Down low-single % QoQ

## Vertical Solution

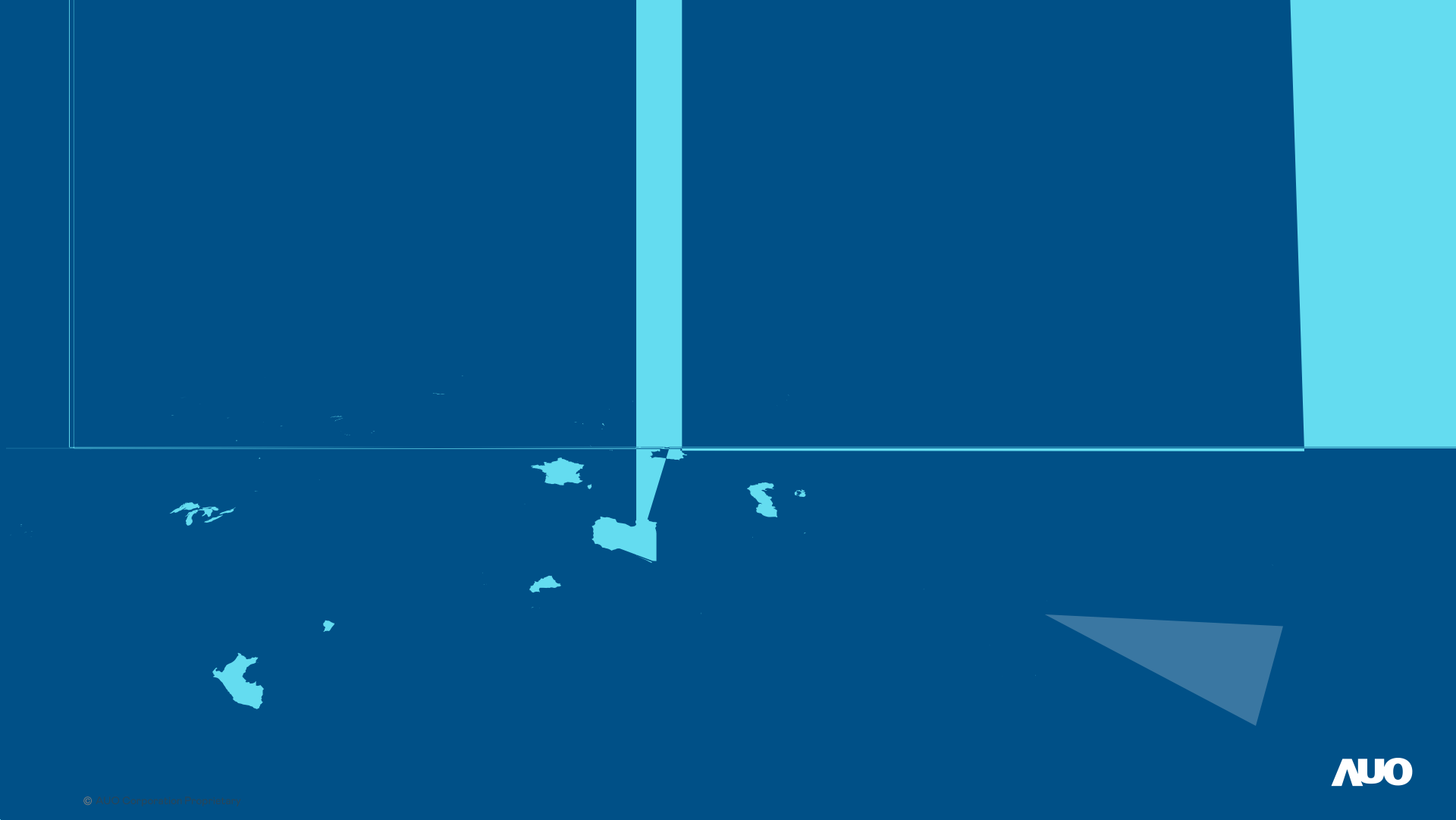
- Up mid- to high-single % QoQ

## Display

- Slight decline QoQ

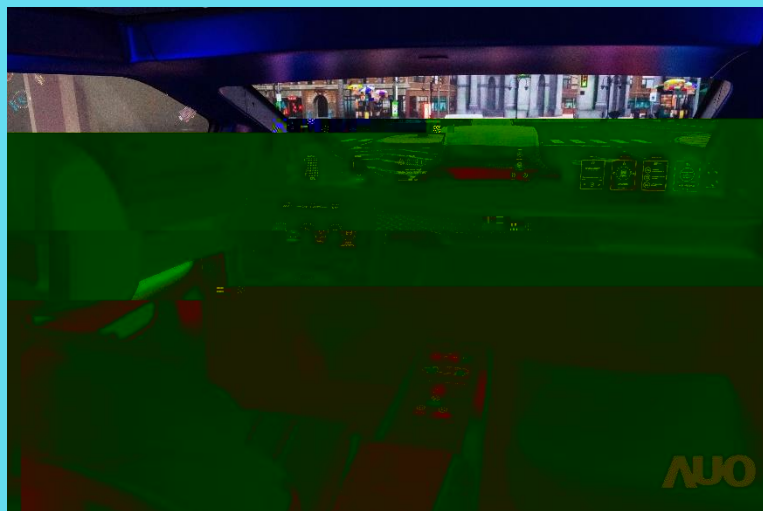
- Final results are subject to change based on various factors, including but not limited to, the global economic conditions.

# Prepared Remarks



# Smart Cockpit

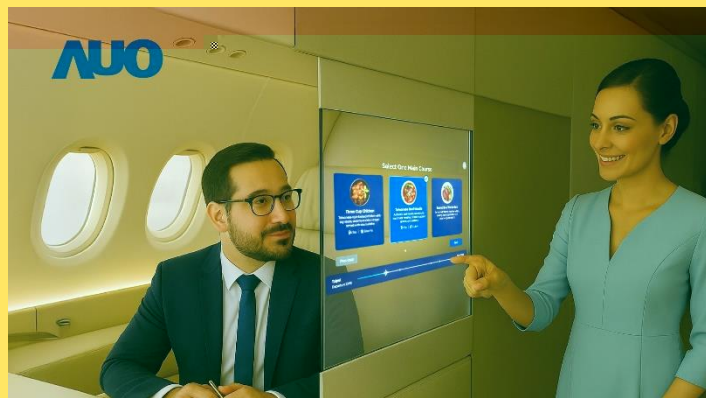
AUO x BHTC



# Advanced Display Technologies



Samsung 114" Micro LED TV



17.3" dual-side transparent Micro LED



65" 8K FSC LCD



Micro LED media bar for AFEELA

# Vertical Solution

## Smart Retail

Leveraging AI to Address Labor Shortages and Optimize Efficiency



**AI Recognition for Precision Marketing**



**Automated Pricing Updates for Promotions**

**Contactless Self-service Solution**

## Smart Enterprise

Bridging Virtual and Real Worlds Efficiently



**Interactive Smart Podium**

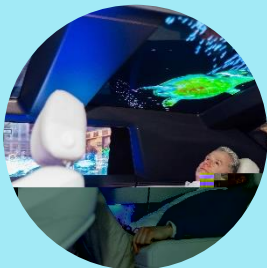
**138" All-in-One LED Display and 92" IFPD**

# AUO 3 Pillars Business

**AUO**

**Maximizing Display Technology Value and Transforming into a Solution Provider**

**Mobility Solution**  
AMSC



**Display**  
AUO



ADP + N



**Green Technology Applied to Empower Sustainability Goal**

**AUO**

# Q&A

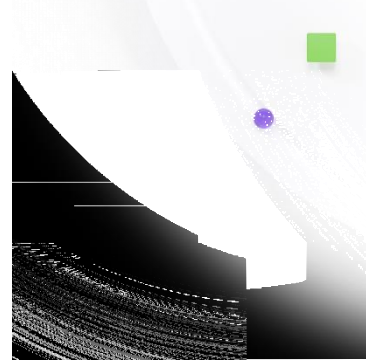
[www.auo.com](http://www.auo.com)  
[ir@auo.com](mailto:ir@auo.com)



**AUO**

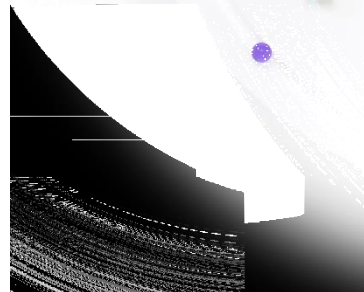
**友達光電股份有限公司及子公司**  
**合併綜合損益表**  
 民國一百一十四年第一季及民國一百一十三年第一季、第四季  
 (單位：百萬元新台幣(NTD)，每股盈餘及在外流通股數除外)

	114年第一季		113年第四季	113年第一季	季成長%	年成長%
	NTD	%	NTD	NTD		
銷貨淨額	72,102	100.0	68,692	59,477	5.0	21.2
營業成本	63,323	87.8	63,246	57,516	0.1	10.1
營業毛利(損)	8,778	12.2	5,446	1,962	61.2	347.5
營業費用	7,638	10.6	8,768	6,902	(12.9)	10.7
營業淨利(損)	1,141	1.6	(3,323)	(4,940)	—	—
營業外收入及支出合計	3,347	4.6	6,243	25,166	(47.2)	105.9
稅前淨利(損)	4,487	6.2	3,019	(3,315)	48.6	—
所得稅利益(費用)	(1,228)	(1.7)	(1,232)	(260)	(0.3)	373.1
本期淨利(損)	3,259	4.5	1,787	(3,574)	82.4	—
其他綜合損益	(670)	(0.9)	1,045	1,492	—	—
本期綜合損益總額	2,589	3.6	2,832	(2,082)	(8.6)	—
本期淨利(損)歸屬於：						
母公司業主	3,294	4.6	1,619	(3,527)	103.4	—
非控制權益	(35)	(0.0)	168	(48)	—	27.8
本期淨利(損)	3,259	4.5	1,787	(3,574)	82.4	—
本期綜合損益總額歸屬於：						
母公司業主	2,555	3.5	2,680	(2,105)	(4.7)	—
非控制權益	35	0.0	152	23	(77.2)	48.5
本期綜合損益總額	2,589	3.6	2,832	(2,082)	(8.6)	—
基本每股盈餘	0.43		0.21	(0.46)		
加權平均流通在外股數(千股)	7,645		7,668	7,668		



友達光電股份有限公司及子公司  
合併資產負債表  
民國一百一十四年及一百一十三年三月三十一日  
(單位：百萬元新台幣(NTD))

資產	114.03.31		113.03.31		年成長	
	NTD	%	NTD	%	NTD	%
現金及約當現金	67,418	17.1	87,634	22.9	(20,256)	(23.1)
應收票據及帳款淨額	26,984	6.9	21,607	5.6	5,377	24.9
其他金融資產-流動	6,905	1.8	4,921	1.3	1,984	40.3
存貨淨額	33,383	8.5	29,402	7.7	3,981	13.5
其他流動資產	5,157	1.3	3,342	0.9	1,815	54.3
流動資產合計	139,848	35.5	146,947	38.4	(7,099)	(4.8)
長期投資	28,462	7.2	27,717	7.2	745	2.7
固定資產淨額	165,047	41.9	170,103	44.5	(5,056)	(3.0)
履行合約成本	9,808	2.5	0	0.0	9,808	-
使用權資產淨額	9,600	2.4	9,731	2.5	(131)	(1.3)
其他非流動資產	41,077	10.4	28,168	7.4	12,908	45.8
非流動資產合計	253,993	64.5	235,719	61.6	18,274	7.8
<b>資產總計</b>	<b>393,840</b>	<b>100.0</b>	<b>382,666</b>	<b>100.0</b>	<b>11,175</b>	<b>2.9</b>
<b>負債</b>						
短期借款	1,394	0.4	285	0.1	1,109	389.2
應付票據及帳款	53,228	13.5	48,515	12.7	4,713	9.7
一年內到期之長期負債	18,295	4.6	7,514	2.0	10,782	143.5
金融負債-流動	64	0.0	77	0.0	(13)	(16.7)
應付費用及其他流動負債	35,497	9.0	33,627	8.8	1,869	5.6
應付設備及工程款	2,737	0.7	4,208	1.1	(1,471)	(35.0)
流動負債合計	111,216	28.2	94,227	24.6	16,989	18.0
長期借款	102,486	26.0	110,339	28.8	(7,853)	(7.1)
其他非流動負債	21,229	5.4	21,437	5.6	(208)	(1.0)
非流動負債合計	123,715	31.4	131,776	34.4	(8,061)	(6.1)
<b>負債總計</b>	<b>234,931</b>	<b>59.7</b>	<b>226,003</b>	<b>59.1</b>	<b>8,928</b>	<b>4.0</b>
<b>權益</b>						
股本	76,679	19.5	76,994	20.1	(315)	(0.4)
資本公積	46,648	11.8	48,386	12.6	(1,739)	(3.6)
保留盈餘	31,213	7.9	28,135	7.4	3,079	10.9
其他權益	(315)	(0.1)	(2,825)	(0.7)	2,510	88.8
專設股票	(1,824)	(0.5)	(240)	(0.1)	(1,584)	(658.7)
非控制權益	6,509	1.7	6,214	1.6	296	4.8
權益合計	158,910	40.3	156,663	40.9	2,247	1.4
<b>負債及權益總計</b>	<b>393,840</b>	<b>100.0</b>	<b>382,666</b>	<b>100.0</b>	<b>11,175</b>	<b>2.9</b>



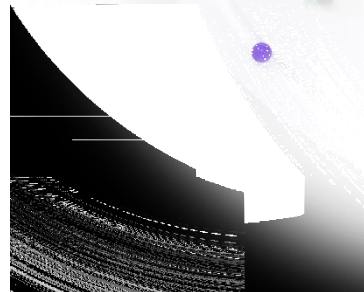
## 友達光電股份有限公司及子公司

## 合併現金流量表

民國一百一十四年及一百一十三年一月一日至三月三十一日

(單位：百萬元新台幣(NTD))

	114年度第一季	113年度第一季
	NTD	NTD
<b>營業活動之現金流量：</b>		
本期稅前淨利(損)	4,487	(3,315)
折舊及攤銷	7,650	8,395
權益法認列之投資損益	62	64
營運資金變動	(6,710)	(1,891)
其他變動	(3,753)	(1,701)
營業活動之淨現金流入(出)	1,735	1,553
<b>投資活動之現金流量：</b>		
處分按公允價值衡量之金融資產	289	0
取得按公允價值衡量之金融資產	(285)	(193)
處分按攤銷後成本衡量之金融資產	553	291
處分採用權益法之投資	0	4,218
取得固定資產	(6,618)	(8,250)
其他變動	940	(1,191)
投資活動之淨現金流入(出)	(5,121)	(5,126)
<b>籌資活動之現金流量：</b>		
短期借款增加(減少)	(2,097)	22
長期借款增加(減少)	5,589	6,019
租賃負債本金償還	(206)	(163)
庫藏股買回成本	(1,824)	0
其他變動	8	7
籌資活動之淨現金流入(出)	1,471	5,885
匯率影響數	887	1,393
本期現金及約當現金增加(減少)數	(1,029)	3,704
期初現金及約當現金餘額	68,447	83,969
期末現金及約當現金餘額	67,418	87,674





Tap Into The Possibilities



**AUO**